

# 遊

Activity

Stroll through a city

# PARK



Inokashira Onshi Park | Musashino



Chofu

## Jindai Botanical Gardens

The largest botanical garden in Tokyo. Approximately 100,000 trees and 4,800 types of plants are grown here.

🏠5-31-10, Jindaiji- motomachi, Chofu-shi 🕒9:30-17:00/Closed on Monday



Koganei

## Koganei Park

This Park is one of the most famous cherry blossom parks in Tokyo. The park also has other attractions such as varied, large playground equipment.

🏠1-13-1, Sekino cho, Koganei-shi



Tachikawa・Akishima

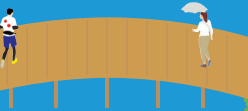
## Showa Memorial Park

A national park boasting a wide space that is equivalent to around 40 Tokyo Domes. Various flowers bloom each season such as tulips in the spring and cosmos in the fall.

🏠3173, Midori cho, Tachikawa-shi 🕒9:30-17:00(Different depending on the season)/No holidays

# PARK

There are many parks rich with nature in the Tama district. Inokashira Onshi Park is one of the most popular of these parks, and 2017 marked the 100th anniversary of its public opening. People flock to see the 600 cherry blossom trees bloom in spring. The sight of cherry blossoms blooming and falling is stunning in its beauty.



Musashino

## Inokashira Onshi Park

🏠1-18-31, Gotenyama, Musashino-shi

🔗 Links



Fuchu

## Fuchu-no-mori Park

A park with an uplifting environment, surrounded by the beautiful greenery of Musashino. It has a spacious turf area, playground equipment, and the Jabu Jabu Pond.

🏠1-3-1, Sengen cho, Fuchu-shi



Higashimurayama

## Sayama Park

A nature park located near Tama Lake. There are wide thickets and the old, unchanging view of the Musashino woodlands.

🏠3-17-19, Tamako cho, Higashi-murayama-shi



Machida

## Machida Yakushiike Park

There is a pond in the center of the park, along with old buildings and tea houses from the Edo period. Seasonal flowers such as plum and cherry blossoms.

🏠3270, Notsuda cho, Machida-shi 🕒6:00-18:00 (-19:00 June-August)/No holidays

