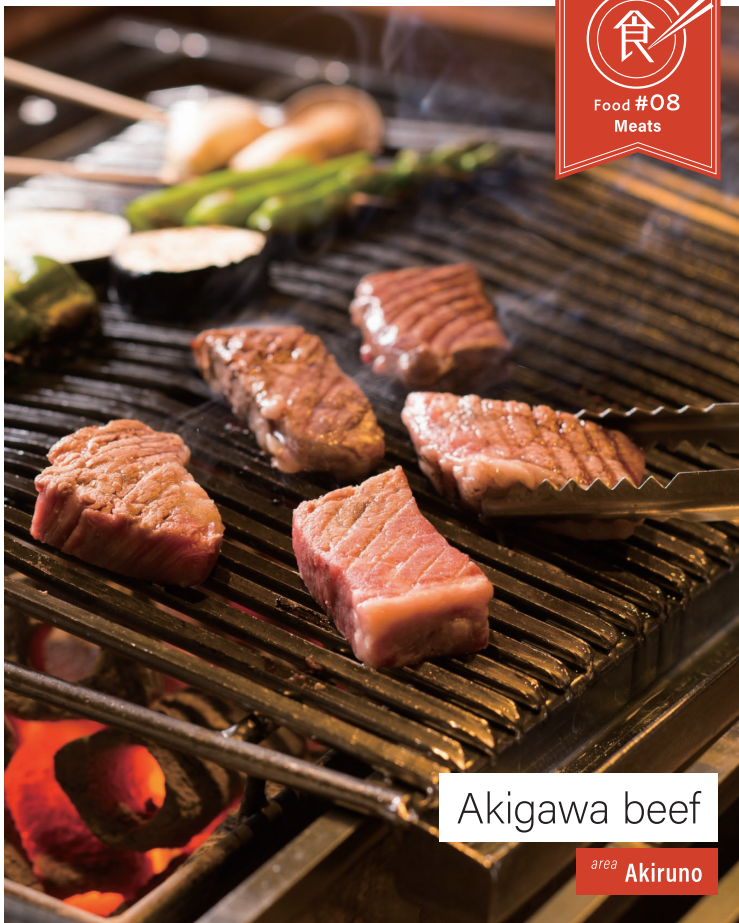




Food #08
Meats



Akigawa beef

area **Akiruno**

Did you know that there is a Tokyo brand of beef?
The Japanese black beef raised in village forests around Akigawa Valley
is delicious, with sweet meat well worth visiting for.

1



Kurochaya

A restaurant where you can enjoy seasonal mountain village cuisine at a 250-year-old Shoya mansion overlooking the Akigawa Valley. A charcoal-grilled course "Chikurin" using Akikawa beef.

☎042-596-0129 🏠167 Konakano, Akiruno
 ⌚11:00-15:00, 17:00-21:00 (LO19:00)
 *Reservations required on weekday evenings / Closed on Tuesdays



Red wine pairs well with the meat
 Locally produced
 "Tokyo Rouge"



The winery is surrounded by the natural beauty of Akiruno. Their standard red wine, Tokyo Rouge, is made from Yama Sauvignon grapes grown on their farm. It is gaining popularity as a new local specialty.

Vineyard TAMA

☎042-533-2866 🏠55 Uenodai, Akiruno ⌚13:00~17:00 / Closed on Tuesdays

2

Matsumura butcher shop



Akikawa beef is purchased from producers in the city and sold in the highest quality freshness. Other must-eats are the Akikawa beef croquette, and menchi.

☎042-596-0253
 🏠116 Konakano, Akiruno
 ⌚9:00 to 19:00 / Closed on Sundays



Akikawa beef curry bread won the Grand Prix!

This bakery in front of Akigawa Station won the highest prize in the Curry Bread Grand Prix 2019 curry category. Heaps of minced Akikawa beef and an undeniable winning taste.

Panya
 A la mode ☎042-550-6505 🏠1-16 Akikawa, Akiruno
 ⌚8:00 to 20:00 / Closed on Thursdays



Enjoy Akikawa Beef BBQ on the riverside

Barbecue spots are scattered around the basin of Akikawa. Procure ingredients locally and have a one-step BBQ lunch.

3

Akigawa Bridge River Park BBQ Land

A 5-minute walk from the station, you can enjoy self-service BBQ on the riverbed.

☎042-596-5122 🏠813 Toruhara, Akiruno
 ⌚8:30 to 16:00 (reception admission-12:30, depending on the season) / Closed on Tuesdays (the next day in the case of a holiday, Open daily in Summer)

4

Akigawa valley river patio

The facility features a wooden cottage and BBQ house. Day trip camps and food sets are available.

☎042-596-5101
 🏠464 Owada, Akiruno
 ⌚10:00 to 16:00 / Open daily



Discover delicious meat

To Akigawa Valley

Akikawa beef is Tokyo's first beef brand. Raised at Takeuchi Ranch in Akiruno City, it is always delivered fast and fresh.

Relish the safe ingredients which condense umimai flavor in the meat itself.



MasSumura butcher /
 MasSumura-san

INFORMATION

🕒36 minutes from JR Shinjuku Station to the Chuō Line Rapid bound for Takao, transfer to JR Ōme Line at Tachikawa Station, 12 minutes, Haijima Station to JR Itsukaichi Line, 11 minutes to Akigawa Station, 20 minutes to Musashi Itsukaichi Station.



Hongo Street

Konakano

2

Higashi Konakano

Hinohara Highway

1

4

Ishigami jinja

Kobanai Bridge

Akigawa Highway

3

Akigawa Bridge

JR Itsukaichi Line
Musashi Itsukaichi Station