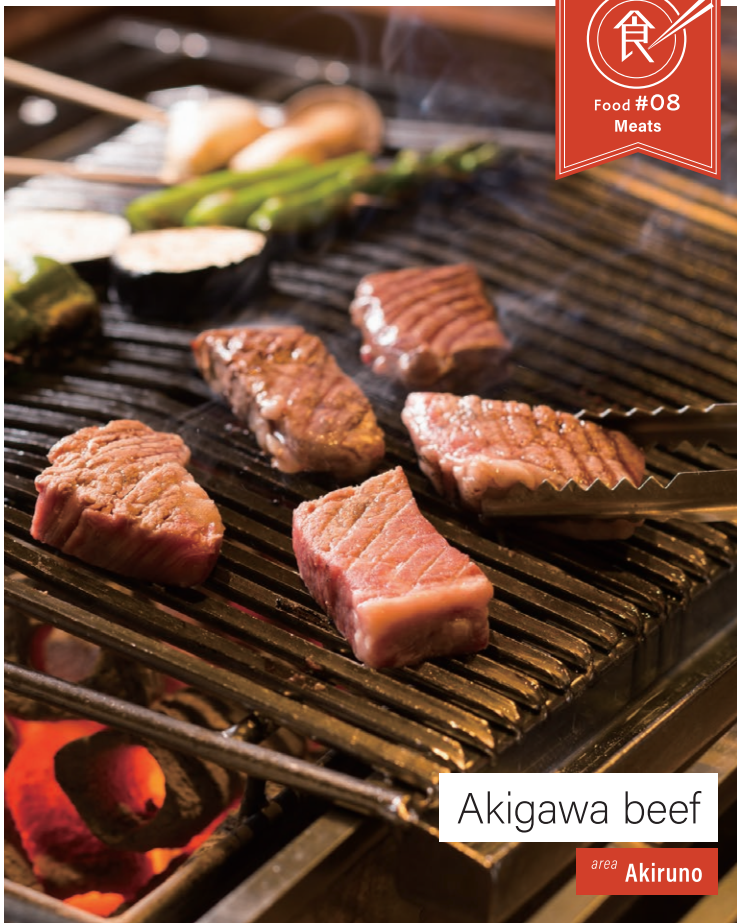




Food #08
Meats



Akigawa beef

area **Akiruno**

Did you know that there is a Tokyo brand of beef?
The Japanese black beef raised in village forests around Akigawa Valley
is delicious, with sweet meat well worth visiting for.

1



Kurochaya

A restaurant where you can enjoy seasonal mountain village cuisine at a 250-year-old Shoya mansion overlooking the Akiyawa Valley. A charcoal-grilled course "Chikurin" using Akiyawa beef.



☎042-596-0129 🏠167 Konakano, Akiruno
 🕒11:00 to 21:00 (last reception is weekdays-19:30, Sundays and holidays-19:00)
 / Closed on Tuesdays (open on holidays, Open daily in the months of April, May, August, October, November and December)

Red wine pairs well with the meat
Locally produced "Tokyo Rouge"



Red wine prepared with Akiru wild grapes shipped for the first time in 2019. It is attracting attention as a new local specialty. In addition to selling at direct sales outlets, you can also taste it at the Black Tea Shop.

Cellar-norabuona

☎042-533-6442 🏠1-6-61
 Midorigaoka, Hamura
 🕒13:00 to 18:00 / Closed on Tuesdays

2

Matsumura butcher shop



Akiyawa beef is purchased from producers in the city and sold in the highest quality freshness. Other must-eats are the Akiyawa beef croquette, and menchi.

☎042-596-0253
 🏠116 Konakano, Akiruno
 🕒9:00 to 19:00 / Closed on Sundays

Akiyawa beef curry bread won the Grand Prix!

This bakery in front of Akiyawa Station won the highest prize in the Curry Bread Grand Prix 2019 curry category. Heaps of minced Akiyawa beef and an undeniable winning taste.

Panya ☎042-550-6505 🏠1-1-16 Akiyawa, Akiruno
A la mode 🕒8:00 to 20:00 / Closed on Thursdays



3

Enjoy Akiyawa Beef BBQ on the riverside

Barbecue spots are scattered around the basin of Akiyawa. Procure ingredients locally and have a one-step BBQ lunch.

3

Akiyawa Bridge River Park BBQ Land

A 5-minute walk from the station, you can enjoy self-service BBQ on the riverbed.

☎042-596-0514 🏠813 Toruhara, Akiruno
 🕒8:30 to 16:00 (reception admission-12:30, depending on the season) / Closed on Tuesdays (the next day in the case of a holiday, Open daily in Summer)

4

Akiyawa valley river patio

The facility features a wooden cottage and BBQ house. Day trip camps and food sets are available.

☎042-596-5101
 🏠464 Owada, Akiruno
 🕒10:00 to 16:00 / Open daily



Discover delicious meat

To Akiyawa Valley

Akiyawa beef is Tokyo's first beef brand.
 Raised at Takeuchi Ranch in Akiruno City,
 it is always delivered fast and fresjji.
 Relish the safe ingredients which condense
 umimai flavor in the meat itself.



INFORMATION

🕒36 minutes from JR Shinjuku Station to the Chuō Line Rapid bound for Takao, transfer to JR Ōme Line at Tachikawa Station, 12 minutes, Hajima Station to JR Itsuakaichi Line, 11 minutes to Akiyawa Station, 20 minutes to Musashi Itsukaichi Station.

