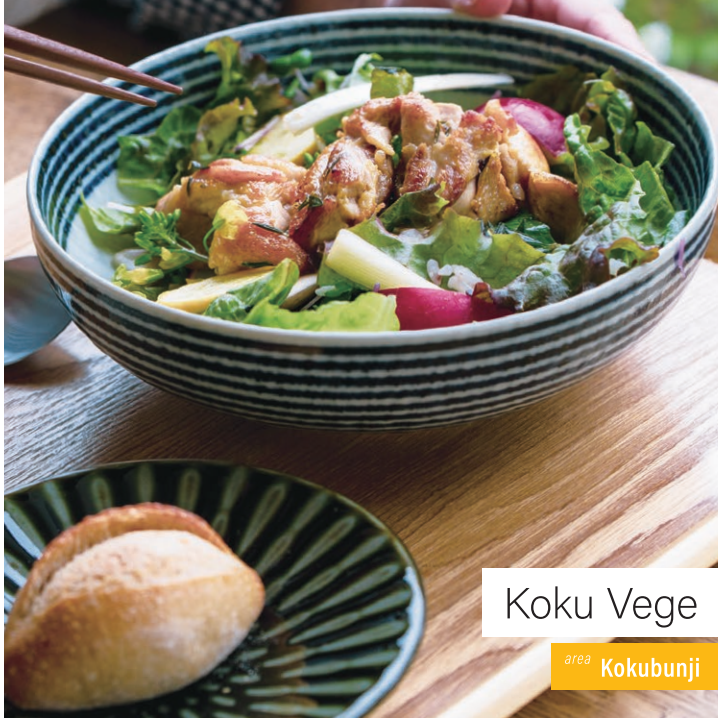




Food #04
Vegetables



Koku Vege

area **Kokubunji**

A delicious cafe tour in this vegetable town where agriculture and food are connected. Boiled, baked, or salad—Enjoy fresh vegetables from local farmers. Enjoy a refreshing menu affects your body and restores your health.

KOKUBUNJI VEGETABLE

Koku Vege Cafewalk

Enjoy a walk around the city and find a cafe where you can taste the fresh Kokubunji 300-year-old vegetable cuisine, "Koku Vege".

Freshly picked Koku vegis harvested straight from the farm The "Koku Vege Service" collects cargo and delivers it directly to restaurants in Kokubunji. Tying together Kokubunji fields and delicious food.

Koku Vege Delivery Staff Yukari Sugimoto



1

SWITCH KOKUBUNJI



Enjoy a salad bowl lunch when you crave hearty seasonal Koku Vege. Combine soup and bread with your fresh salad.

☿ 3-22-31 Shimazaki Building 201, Minamicho, Kokubunji
 ☉ 11:00 to 19:00 / Closed on Mondays

2

In this retro, calm atmosphere linked with a bookstore, feel free to enjoy a delicious menu featuring Koku Vege.



Kurumido Cafe

☿ 2-17-3 Honcho, Kokubunji
 ☉ 11:00 to 18:00
 (Tue, Wed, Fri, Saturday-21:00) /
 Closed on Thursdays

3



Ota CAFE

A café along the green hawk road. Smooth potage soup with plenty of seasonal Koku Vege.

☿ 1-13-6 Nishimotomachi, Kokubunji
 ☉ 9:00 to 17:00 (Saturday and Sunday from April to October, weekdays from July and August to 19:00) Closed on Thursdays

4

CAFE FLAT



The butter cake full with grated carrots is exquisite. Enjoy your meal slowly here in the open atmosphere.

☿ 2-9-1 life tower 1F, Nishikokubunji, Izumicho, Kokubunji
 ☉ 11:30 to 22:00 (21:30LO)
 Irregular holidays



① 29 minutes from Shinjuku Station to Kokubunji Station on the JR Chuo Line Rapid Takao, etc., 31 minutes to Nishi Kokubunji Station

* All items on the menu are seasonal only.