

**HARMONICA KITCHEN
AND BAR**

Café

Ali Bhasa
Janne Staff
Harry Chan

Go bar hopping
in an alluring drinking district

清酒
多端自慢
タマシマン
大衆酒場
美舟

中華メニュー
1品全て500円、ダブル1,000円

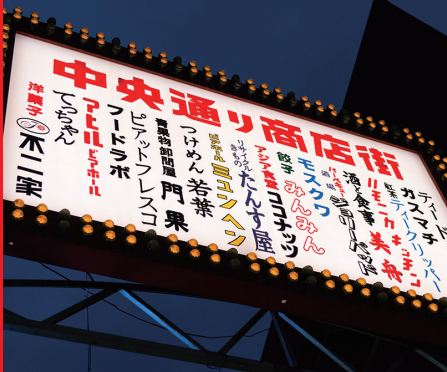
[illegible]

Harmonica Yokochō | Musashino

hamoyoko.jp

Culture 文化

Kichijoji is currently "the most popular town to live in" for its convenient location near the center of Tokyo and rich lineup of stores as well as public facilities. Harmonica Yokocho is a famous alley of this attractive town, located near the station. Around 100 Japanese drinking establishments are tightly packed in this confined area, including casual standing pubs as well as rather stylish bars. The Aka Chochin (red lanterns) has been used as signs of Japanese Izakayas (pubs) from the old days, and this alley strongly displays that atmosphere of a traditional drinking town from the Showa period. Many drinkers gather to enjoy their drinks and It's almost impossible to resist the temptation of hopping from one bar to another in this place that serves so many delightful drinks and food.



Musashino

Harmonica Yokocho

MAP D7 1-1, Kichijoji honcho, Musashino-shi ¥Depends on the shops



Also worth visiting

仲見世商店街



Tama area

Shopping arcades

There are several lively and unique shopping arcades in the Tama region. Most of them retain a retro atmosphere from the Showa period.

Daitokyo Sogo Oroshiuri Center

This is one of the largest wholesale markets in the Tama region. There are around 70 stores that sell vegetables, fruits, seafood products, and general goods.

MAP C6 4-1, Yazaki cho, Fuchu-shi 08:00-17:00 (depends on the shops) / Closed on Sundays, holidays, Wednesdays



Fuchu



Tour exciting markets



Machida

Various "markets" are held in the Tama area. These include morning markets, antique markets, craft markets, and organic marches. There are also monthly "markets".

MAP A6 1-21-5, Haramachida, Machida-shi in Machida Tenmangu 07:00-15:00/once a month